

OMNI-297



User Guide

South Africa

Unit 4, N1 Industrial Park
Landmarks Ave
Samrand, 0157
South Africa
Tel: +27 12 657 0050
info@poynting.tech

Europe

Kronstadler Straße 4,
81677 München
Germany
Tel: +49 89 2080 265 38
Mob.: +49 176 529 733 50
sales-europe@poynting.tech

Index

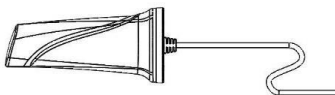
1.	Packing Check List	4
2.	Introduction	6
3.	Antenna Mounting Precautions	8
4.	Cable Routing	8
5.	Safety	9

1. Packing Check List

Item	Description	Quantity
1.	A-OMNI-0297 Antenna Only	1
2.	Wall Knock-in Screws	2
3.	Pipe Clamp	1
4.	SMA Grip Extender	1
5.	Adhesive Disc	1
6.	L-Bracket	1
7.	M4 stainless steel machine screw and washer	4

Appearance of Components

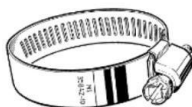
Antenna Unit



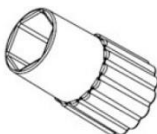
Wall Knock-in Screw



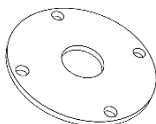
Pipe Clamp



SMA Grip Extender



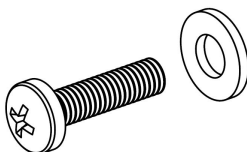
Adhesive Disc



L-Bracket



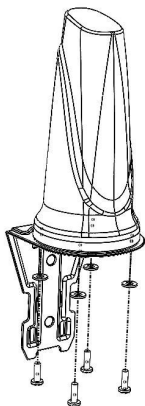
M4 machine screw and M4 flat washers



2. Introduction

This User Guide provide information on the installation instructions of the Omni-directional antenna (A-OMNI-0297).

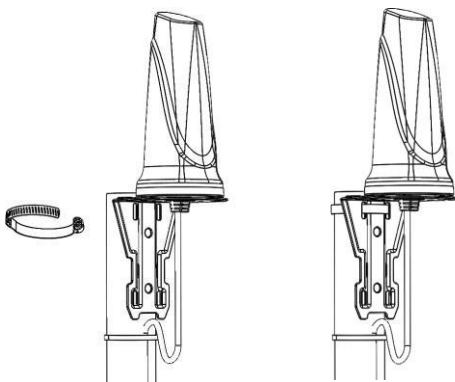
For both pole and wall mount options, attach the L-Bracket to the antenna first using the provided M4 screws and washers.



Antenna Configuration 1

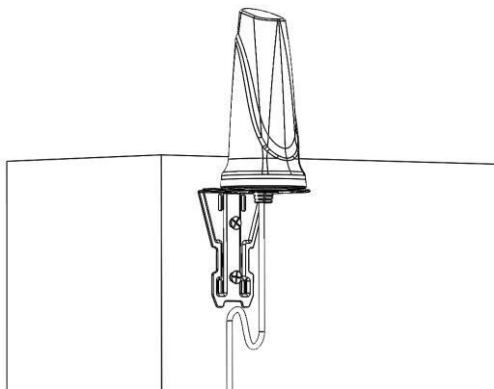
Pole mount with L-Bracket and pipe clamp

Exploded View



Antenna Configuration 2

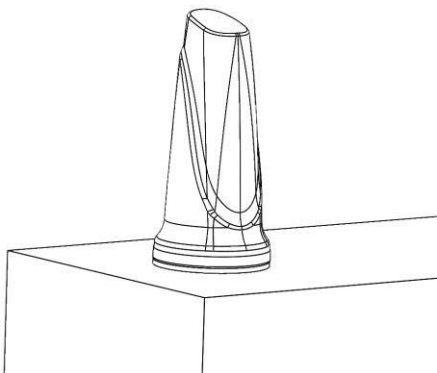
Wall mount with L-Bracket and knock-in screws



Antenna Configuration 3

Surface mount with adhesive disc

Use adhesive disc as template for drilling a cable hole



3. Antenna Mounting Precautions

- Place the antenna at the highest point and ensure that there aren't any surrounding obstructions to the antenna.
- In order to avoid communication interference, ensure that the antenna is placed at least 0.5m away from other antennas and metal objects.
- Avoid installing the antenna near a chimney, as the smoke and soot emitted by the chimney can obstruct the signal level achieved by the antenna.
- Install the antenna away from heat sources and flammable gases.

4. Cable Routing

- Survey the planned cable route and look for any blocked passages. Consider alternate routes to find the best available path. Always keep the cables as short as possible to make sure that minimum cable losses are achieved.
- Note: Take advantage of any existing cable channels. e.g wiring conduits to route the cables.
- Avoid running cables through components or sharp apertures that may cause excessive chafing. Doing so may erode the jacket and break signal continuity. Also, avoid kinking, pinching, or twisting a cable during a run.
- Use cable ties to secure the antenna cables.

When handling the antenna cables, it is essential you follow these basic rules:

- Never pull on the cable connectors; pull only on the cable.
- Tighten the connectors and ensure that the cables don't rattle loose.

5. Safety

- The antenna may not be used as a climbing or pulling device.
- Considerations must be taken when mounting the antenna that people do not hang or pull on it.
- Avoid using bits that are dull, bent or damaged.
- Be aware of where your fingers are in relation to the drill bit when using the drilling machine.
- To stop the drilling machine, let the drill chuck come to a complete stop on its own. Never grasp the chuck in an attempt to stop the drill bit.
- Avoid installation while under the influence of drugs, alcohol or medication.
- Make sure that any loose-fitting jewellery or clothing is secured and tie back long hair as they can get caught in moving parts during installation.
- Avoid awkward hand positions where a sudden slip could cause a hand to move into the drill bit or cutting tool.