



QUICK USER GUIDE

En

!!! Please refer to our website: www.geemarc.com for an up to date user guide, as there may be important updates and changes you need to be aware of !!!

CAUTION : Use only the battery provided. There may be a risk of explosion if a wrong type of battery is used for the parent unit. The battery cannot be subjected to high or low extreme temperature and low air pressure at high altitude during use, storage or transportation. Disposal of battery into fire or a hot oven, or mechanically crushing or cutting or the battery can result in an explosion. Leaving the battery in an extremely high temperature surrounding environment can result in an explosion or the leakage of flammable liquid or gas. Battery subjected to extremely low air pressure may result in an explosion or the leakage of flammable liquid or gas. Dispose of used battery according to the instructions.

Normal operating temperature for the product (e.g. 0 °C ~ 40°C).
Use only the battery listed below.

⚠️📖 Alkaine Batteries : TYPE: AA 1.5V x 2 pcs.

IMPORTANT SAFETY INSTRUCTIONS

When using your doorbell equipment, basic safety precautions should always be followed to reduce the risk of fire, electric shock and injury, including the following.

1. Read and understand all the instructions.
2. Follow all warnings and instructions marked on the product.
3. Do not use liquid cleaners or aerosol cleaners. Use a damp cloth for cleaning.
4. Do not expose the product to direct sunlight or extreme cold environment. Do not put the product close to heating sources such as radiators, cookers, etc.
5. Unplug this product from the wall outlet and refer servicing to the distributor under the following conditions:
 - If the product does not operate normally by following the operating instructions.
 - If the product has been dropped and the cabinet has been

damaged.

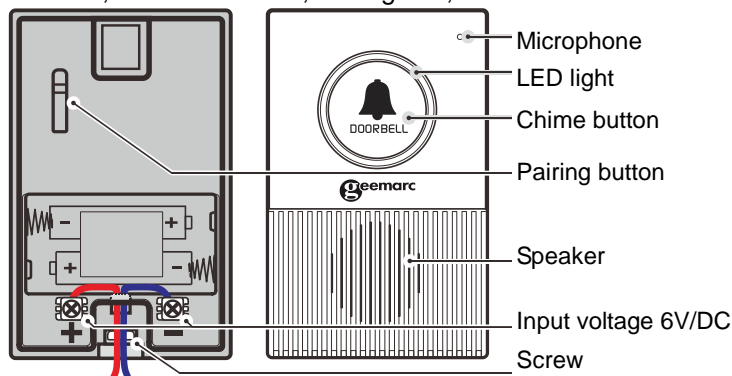
- If the product exhibits a distinct change in performance.
6. Do not use the doorbell near a gas leak.
 7. Please note the correct polarity while inserting the batteries.

GETTING STARTED

Package contents

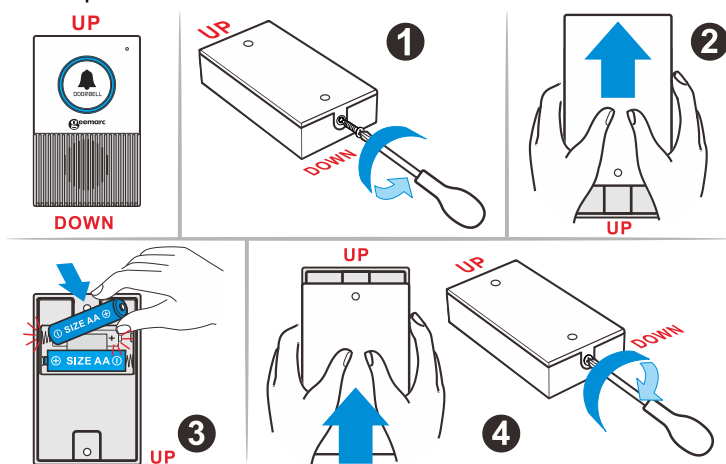
The package contains the following items:

Doorbell, AA batteries x 2, User guide, Screws and Anchors



Install batteries to the Doorbell

1. Remove the screw in the bottom.
2. Push to remove the wall mount cover at the back.
3. Install two AA batteries into the battery compartment, matching the polarity markings (+ and -) inside the battery compartment.
4. Push to attach the wall mount cover back to the battery compartment and insert the screw.



REGISTRATION

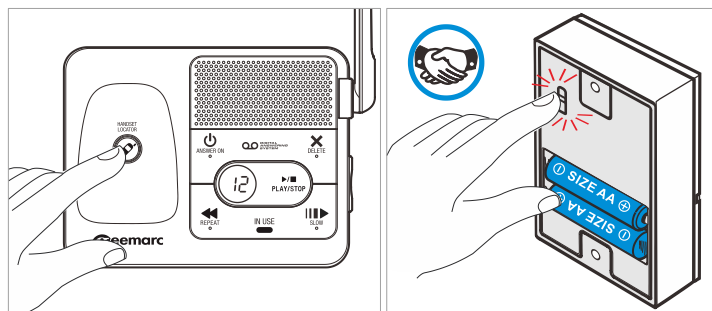
Registration

If you are buying an additional doorbell, follow the procedure in next chapter.

If your doorbell is sold with the AMPLIDECT595 U.L.E in pack format, you do not need to register.

Easy Registration for Audio Doorbell

1. Make sure the doorbell is powered on with batteries before registering it to the telephone base.
2. **Press and hold**  / **Handset locator** key on the telephone AD595 ULE base until you hear a beep.
3. **Press and hold** the pairing button of the Audio Doorbell until the blue LED light flashes. The Audio Doorbell is now registering to the AMPLIDECT595 U.L.E.



When the Audio Doorbell is successfully registered to the base, you will hear confirmation beeps.

Please note : The maximum number of doorbells you can have connected to the AMPLIDECT595 U.L.E is **2**.

USING

Install the doorbell, press and check that the doorbell remote is properly connected and is within the correct range to ring the AMPLIDECT595 U.L.E.

During the doorbell alert, press the Green button of the handset to start the communication between the handset and the remote.

TROUBLESHOOTING

If you have difficulty with your phone, please try the suggestion listed below.

| Problem | Solutions |
|--|---|
| There is no LED light flashing on the doorbell when it is pressed | <ul style="list-style-type: none"> • Make sure you install two AA batteries and connect AC power supply to the doorbell. • The doorbell may have run out of battery. You may need to replace new batteries. |
| The doorbell doesn't work with the telephone system equipment | <ul style="list-style-type: none"> • Make sure the doorbell is registered to the telephone system. • If the previous suggestions do not work, deregister all devices and register them to the telephone base again. |

TECHNICAL SPECIFICATIONS

| | |
|-------------------------|------------------------------------|
| Frequency control | Crystal controlled PLL synthesizer |
| Transmit frequency | 1.88 GHz-1.9 GHz |
| Channels | 10 |
| Nominal effective range | Indoor: 50m Outdoor: 300m |
| RF power | < 250mW |
| Power requirements | AA Alkaline batteries (2) |

CARE AND MAINTENANCE

Take care of your Audio Doorbell

- Your Audio Doorbell contains sophisticated electronic parts, so you must treat it with care.
- Avoid rough treatment.
- Place the Audio Doorbell down gently.
- Save the original packing materials to protect your Audio Doorbell if you ever need to ship it.

Avoid water

- You can damage your Audio Doorbell if it gets wet. Do not use the Audio Doorbell in the rain, or handle it with the wet hands. Do not install the telephone base near a sink, bathtub or shower.

Electrical storms

- Electrical storms can sometimes cause power surges harmful to electronic equipment. For your own safety, take caution when using electric appliances during storms.

Cleaning your Doorbell

- Your Audio Doorbell has a durable plastic casing that should remain in good condition for many years. Clean it only with a soft cloth slightly dampened with water or a mild soap.
- Do not use excess water or cleaning solvents of any kind.

GUARANTEE

From the moment your Geemarc Doorbell595 U.L.E is purchased, Geemarc guarantee is for the period of two years. During this time, all repairs or replacements (at our discretion) are free of charge. Should you experience a problem then contact our help line or visit our website at www.geemarc.com.

The guarantee does not cover accidents, negligence or breakages to any parts. The product must not be tampered with or taken apart by anyone who is not an authorized Geemarc representative.

The Geemarc guarantee in no way limits your legal rights.

IMPORTANT: YOUR RECEIPT IS PART OF YOUR GUARANTEE AND MUST BE RETAINED AND PRODUCED IN THE EVENT OF A WARRANTY CLAIM.

Please note: The guarantee applies to the United Kingdom only.

DECLARATIONS:

UKCA Directives

Geemarc Telecom SA hereby declares that this Doorbell595 U.L.E is in compliance with the essential requirements and other relevant provisions of the RED 2014/53/UE.

The declaration of conformity may be consulted at www.geemarc.com

Recycling Directives

The WEEE (Waste Electrical and Electronic Equipment) has been put in place for the products at the end of their useful life are recycled in the best way.

When this product is finished with, please do not put it in your domestic waste bin. Please use one of the following disposal options:

- Remove the batteries and deposit them in an appropriate WEEE skip.

Deposit the product in an appropriate WEEE skip.

- Or, hand the old product to the retailer. If you purchase a new one, they should accept it.

If you respect these instructions you ensure human health and environmental protection.

For product support and help visit our website at www.geemarc.com

E-mail : help@geemarc.com telephone **01707 387602**
lines are open 09h00 to 16h00 Mon to Fri



Parc de l'Etoile, 2 Rue Galilée, 59791 Grande-Synthe Cedex
France.

Manufacturer: Vtech (Dongguan) Telecommunications Limited.
Vtech Science Park, Xia Ling Bei Management Zone, Liaobu, Dongguan, Guangdong.

This product is made in China To Geemarc Telecom



QUGDOORBELL595 U.L.E_En_A4_V1.4